



Mobilizing partnerships for multi-sector, transdisciplinary research to action

A look at field examples



Sonia Fèvre, Veterinarians without Borders (VWB); Daovy Kongmanila, FoA, NUOL; Margot Camoin, VWB; Fabienne Uehlinger, Saskatoon University; Lauren Crawshaw; Hung Nguyen-Viet, HSPH; Pattamaporn Kittayapong, Mahidol University

Thursday 13 August 2014

...Given that ... collaborative and social components often remain largely hidden in conventional research proposals and published conclusions, their application in design and practice can often be less rigorously reviewed and enacted compared to the design and practice of conventional research.

Allen et al, 2014, *Env. Mgt*



OVERVIEW

Mobilizing partnerships for multi-sector, transdisciplinary research to action

Partnerships and transdisciplinarity


Research to action

Examples from the field

Partnerships – the real deal!
Taking a closer look...

What is applied research about?


Research to action and action research: examples from the field



PARTNERSHIPS IN RESEARCH

PARTNERSHIPS & TRANSDISCIPLINARITY

| Why collaborate | Challenges |
|--|--|
| Utilise complementary capacities and strengths | Process goals (capacity building) vs. results goals (quality research) & setting standards |
| Serve common interests & goals | Political, economic, social pressures are different for partnering institutions |
| Access and use different types of knowledge | Constraints of research paradigm Timeframe for change |

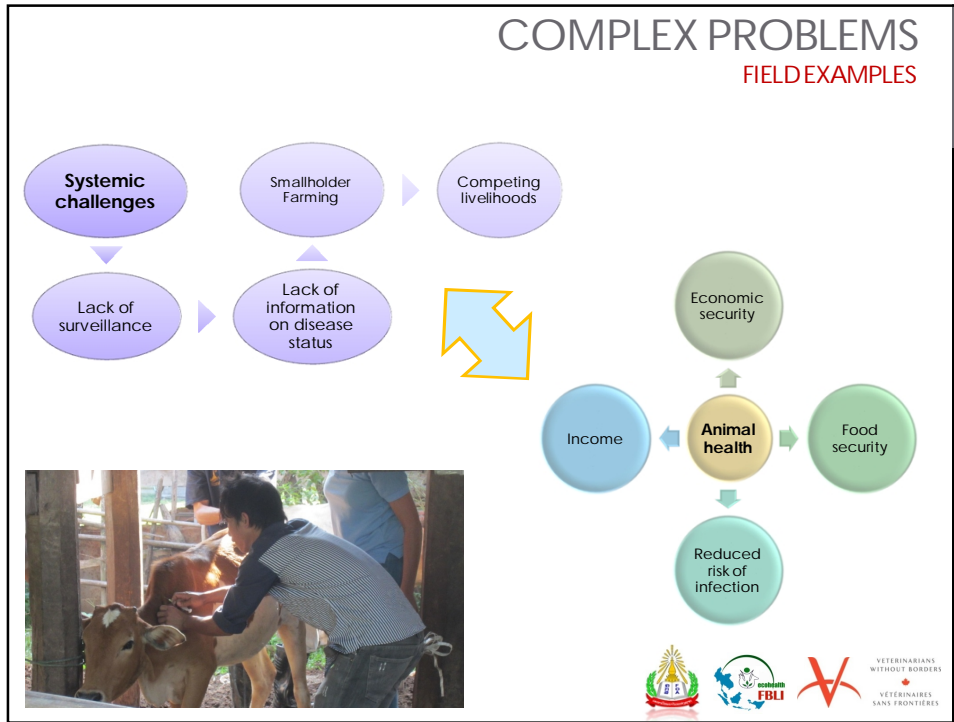


RESEARCH AND ACTION



Understanding Science, http://undsci.berkeley.edu/article/0_0_0/whatis-science_09





VILLAGE RESEARCH

FIELD EXAMPLES

ANIMAL HEALTH MONITORING

Hypotheses:

- Hypothesis 1: farms which collaborate with a PAHW experience less animal mortality than farms without PAHWs
- Hypothesis 2: villages with PAHWs experience less animal mortality than villages without PAHWs

Study design: longitudinal cohort study

Outcomes measured:

- Mortality rate (between farms; between villages)
- Laboratory confirmed diagnosis of selected diseases

VILLAGE RESEARCH

FIELD EXAMPLES

ANIMAL HEALTH MONITORING

Data collection

- Questionnaire at the beginning and end of the project
- Monthly recording form on livestock animal health by farmers
- Clinical exams and quarterly sampling of parasite load of sub-set of animals
- Sample analysis of sick animals spotted during monthly visits by students

Communication

- Monthly de-briefing meetings amongst team
- Quarterly feedback meetings with farmers
- Sharing of lab results + official certificate by FoA





ANIMAL HEALTH MONITORING & ACTION RESEARCH

- **Capacity building** for students, teachers, NGO staff, animal health workers, farmers
- Testing **the boundaries of research** – action research, using comparison study principles
- **Ethical challenges**: non-treatment in control villages (how to make this acceptable)
- **Two-way communications**: regular farmer feedback meetings, responding to local knowledge and needs
eg. sharing animal-specific results with farmers
- **Institutionalisation**
 - Research projects for final year students
 - Integration into curriculum for vet students



HOW – IN THE FIELD OF ECOHEALTH - DO WE ADDRESS THESE CHALLENGES?

How can we improve the transparency of what’s really happening in “collaborative and social” realities of fieldwork in this field?

How do we prioritise our time, efforts and goal-setting with regards to capacity building and standard setting of research processes?

How do we ensure we’re building partnerships which are resilient enough to adapt to the changing circumstances and needs of each?



Working Together

We shape our self to fit this world

and by the world are shaped again.

The visible and the invisible working together in common cause...

So may we, in this life trust

to those elements we have yet to see or imagine,

and look for the true shape of our own self, by forming it well

to the great intangibles about us.

-- David Whyte from [The House of Belonging](#) ©1996 Many Rivers Press



Thanks to the Foodlive Camlao team and to FBLI for partnerships and team work.

Thanks to IDRC, DFATD and Canadian donors for making this work possible.

www.vetswithoutborders.ca
sonia@vetswithoutborders.ca

REFERENCES

Will Allen, Shaun Ogilvie, Helen Blackie, Des Smith, Shona Sam, James Doherty, Don McKenzie, James Ataria, Lee Shapiro, Jamie McKay, Elaine Murphy, Chris Jacobson, Charles Eason (2014) **Bridging Disciplines, Knowledge Systems and Cultures in Pest Management**. *Environmental Management* 53(2):429-440.

Fazey, I., J. A. Fazey, and D. M. A. Fazey. 2005. Learning more effectively from experience. *Ecology and Society* 10(2): 4. [online] URL: <http://www.ecologyandsociety.org/vol10/iss2/art4>

Judi Marshall and Peter Reason (2007) Quality in research as "taking an attitude of inquiry" *Management Research News*, Vol. 30 No. 5, 2007, pp. 368-380